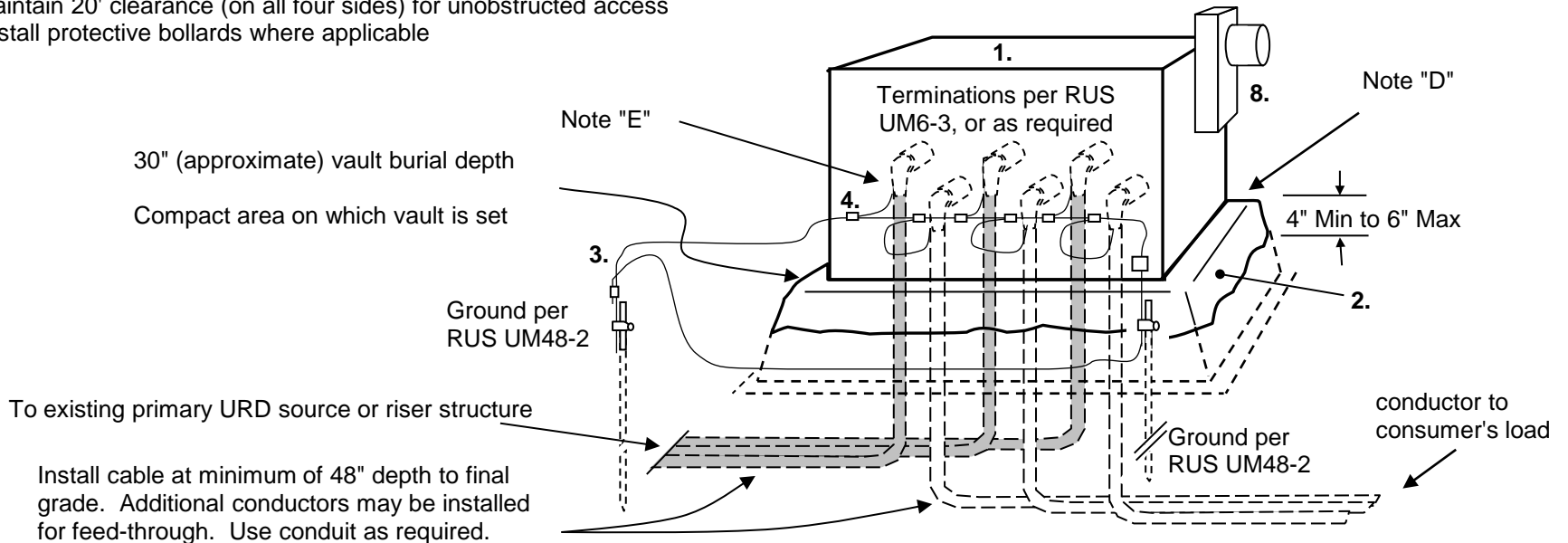


**Notes:**

- A) All clearances and protective devices to be in conformance to the most stringent requirements of either the NESC, NEC or other codes of governmental or regulating authorities as applicable.
- B) Mount meter cabinet per manufacturer instructions.
- C) 25kV 200A Feed through Metering Cabinet: Shallbetter SPMD-325-2222GA (200A) or similar. 72"Wx54"Dx54"H minimum.
- D) Fiberglass vault PRECorp part number 8101; Nordic GS-80-54-36RT-MG-56X18 (80x54x36") or similar
- E) Terminate elbows install slack in the elbow "drain" conductor to facilitate use of a amprobe above the concentric neutral at base of elbow.
- F) Maintain 20' clearance (on all four sides) for unobstructed access
- G) Install protective bollards where applicable



**MATERIALS LISTING**

ITEM	DESCRIPTION	QTY	UNIT	PREC #	ITEM	DESCRIPTION	QTY	UNIT	PREC #
1	3 Phase Padmount Meter Cabinet	1	Ea.	8127					
2	Meter Cabinet (Transformer) Vault	1	Ea.	8101					
3	#2 Stranded	30	Ft.	3112					
4	#2 to #2 Copper Crimps	7	Ea.	9028					
5	1-1/2" x 1/2" Bolts	4	Ea.						
6	1/2" Nuts	4	Ea.						
7	Washers	4	Ea.						
					8	Form 9S/8S Class 20 120V or 120-480V 4-Wire 3Ø Meter	1	Ea.	

Related construction units (installed according to other PRECorp standards):  
 1) Primary URD cabling size 1/0 EPR but will depend upon application and load.  
 2) Three (3) elbows as required, or per RUS UM6-3. Six (6) elbows for feed-through  
 3) Trench tape and underground hazard/cable markers as required.  
 4) Ground per RUS UM48-2 using 2 ground rods .

**25kV Three Phase Primary Underground Delivery Padmount Metering  
200 A**

1 of 1  
Revised  
01/04/21



**UQ3.3P2-25kV**